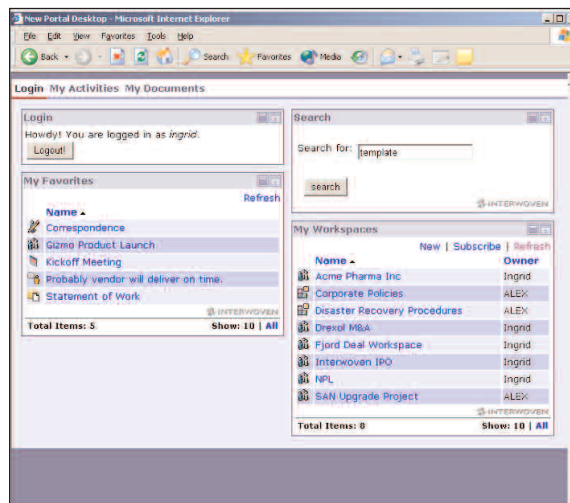


Interwoven's Collaboration and Document Management Portlets for BEA WebLogic Portal™ 8.1

Portal initiatives have been a major focus for businesses and IT professionals in recent years. Little wonder given the improved service levels, increased productivity, and superior vendor coordination achieved through providing employees, customers and partners with a rich user experience and access to information housed within different systems.

Historically, portal deployments centered on aggregating structured data and simplifying access to disjointed back-end systems (such as a 360 degree view of a customer achieved by integrating data from the CRM, Billing, Help Desk, and other transactional systems). Traditional portals have successfully squeezed cycles out of the organization through automation. Today, companies are looking for more from their portals. Companies want to drive critical business initiatives by quickly assembling experts from around the globe, enabling the team to solve the problem, disband and regroup for the next initiative. As a leader in innovative content management solutions, Interwoven is again leading the way with the release of a suite of Collaborative Document Management (CDM) portlets to help increase the productivity, utilization, and ROI of a company's portal initiative.

Interwoven has learned that the key to success for Collaborative Document Management (CDM) technologies is delivering the features needed by users, and delivering them in the most appropriate environment. Interwoven offers one of the broadest arrays of CDM functionality and features in the marketplace today and continues to be a leader in setting the standard for usability. Now Interwoven is able to deliver this functionality to BEA Portal customers by way of a new suite of portlets for WebLogic Portal 8.1.

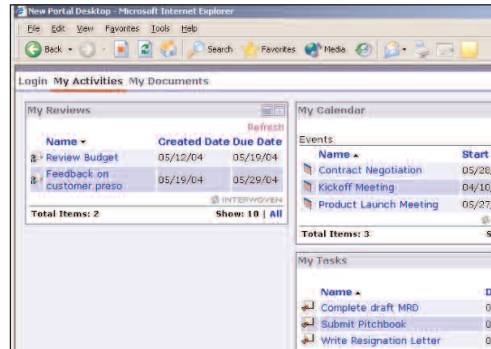


WorkSite MP Portlets for WebLogic Portal™

By introducing CDM features — such as team workspaces, workflow, task management, group calendaring, and search into the BEA portal — employees, partners, and customers realize even more value from their portal experience. Interwoven's CDM Portlets help companies overcome the challenges posed by distributed workforces working on complex business processes under compressed sales cycles. Whether deployed for Deal Management, New Product Introduction, Engagement Management, or Project Planning, Interwoven's CDM Portlets improve the productivity, processes, and agility of your organization. Interwoven has truly expanded the definition of "delivering CDM functionality where and when users need it" by introducing highly-robust CDM features once found only in desktop or thick-client deployments, seamlessly into the BEA WebLogic Portal environment.

Available CDM Portlets

1. **Workspace Subscriptions** – users can view WorkSpaces relevant to them, giving instant access and visibility into the status of those projects. Users can also create collaborative WorkSpaces from this portlet using a simple set-up wizard.
2. **Search** – Users can search the content repository using metadata and full-text criteria. The search engine returns both content and collaboration items including tasks, calendars, and discussions. Users do not need to leave the portal to sift through the results.
3. **My Tasks** – Users can stay abreast of tasks assigned to them by others through “My Tasks”. Tasks contain all the associated information – templates, instructions, and drop off location for deliverables – so contributors have all the information they need to complete the job.
4. **My Calendar** – Similar to the way Outlook users can coordinate and schedule activities of themselves and other calendar users, the My Calendar portlet gives the same functionality for team WorkSpaces. Users can also download events into their PIM device.
5. **Checked Out Documents** – The checked out list consolidates all items currently locked by the user, and provides a visual reminder to the user of the date they are due back into the repository. Users can also check in documents directly from this portlet.
6. **My Reviews** – Workflow assignments are aggregated into this single portlet, ensuring users are aware of items awaiting their approval. This view into



WorkSite MP Portlets for WebLogic Portal™

a worker's approval queue reminds and streamlines review and approval cycles.

7. **Document Worklist** – Navigating across enterprise repository can be time consuming and error prone. The Worklist provides a handy shortcut to the user's 50 most recently accessed documents.
8. **My Favorites** – As users interact with content and WorkSpaces, they can add items of interest to their favorites folder by clicking on the “Add to Favorites” button. These items are consolidated for the user in a single Favorites list available from their portal page. Clicking on an item takes the user directly back to the workspace of object.
9. **My Folders/Documents** – Designed to give users direct access to any folder in the repository. This portlet allows users to fully interact with the content contained in those folders with a range of CDM functionality (including, check in, checkout, editing profile, etc.). In essence, a folder view into the repository customized for each user and their content preferences.

Value of CDM Portlets

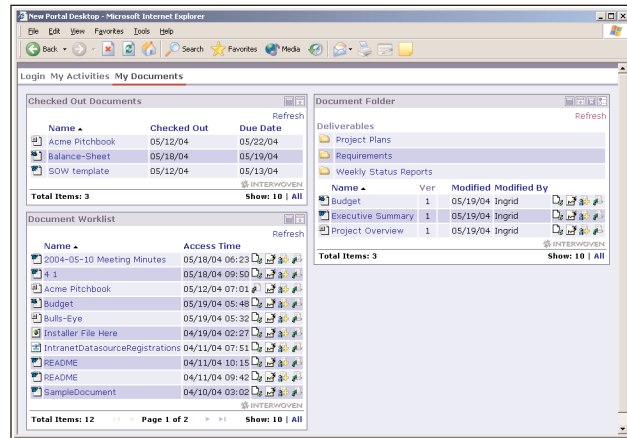
Users get access to all the features found in Interwoven's market-leading CDM solution as discrete Portlets within BEA WebLogic Portal. With "single sign on" from the portal interface, users are validated within the CDM server and rights, access, and preferences are loaded within the Portlets and displayed within the BEA WebLogic Portal environment. Users can organize team projects, maintain oversight of the projects that they are involved in, and track their commitments through personalized portal pages easier than ever before.

Getting Started

Interwoven's CDM Portlets come with full documentation and sample code, everything customers need to integrate and customize the Portlets to meet unique business needs. Customization is quick and easy because the Interwoven Portlets were developed using the familiar PageFlows and Controls of BEA WebLogic Workshop™. An added benefit of native BEA portlets is that developers can leverage all of their existing technical skills. Visit <http://devnet.interwoven.com> to gain access to these portlets.

Summary

Many of the world's leading enterprises rely on integrated solutions from BEA and Interwoven to maintain their competitive edge. Common



WorkSite MP Portlets for WebLogic Portal™

BEA and Interwoven customers include: Avis, Bose, British Telecom, Centrica, DirecTV, General Motors, Motorola, Novartis, and Toshiba.

Interwoven has learned that key to success for CDM initiatives is delivering the features needed by users, and delivering them in the most appropriate manner. Interwoven and BEA have partnered to help companies achieve their portal objectives; whether increasing workforce productivity, improving customer service, or streamlining access to information, Interwoven CDM portlets for BEA WebLogic Portal allow your teams to see and interact with the information they require, in ways that are customized for their specific needs.

"The existing product integrations between BEA and Interwoven – combined with our numerous joint customers – make this a very valuable and very natural development for both our organizations. Many customers we speak to have a pressing need for Collaborative Document Management functionality, and the new functionality from Interwoven addresses this need head on. We are embracing these new Portlets from IWOV on several levels because they clearly support our vision of enabling companies to improve their service levels, deal transaction times, and reduce cost all within the constructs of their enterprise portal and Interwoven has delivered a truly enterprise-class solution to this business need."

– Scott Eddington, SVP of Alliances, BEA

Supported Platforms

- Operating Systems: MS Windows 2000 Server/2000 Advanced Server/2003 Server
- Database: MS SQL 2000 SP3
- JDK Supported: 1.4.2_03
- Web Servers: Apache HTTP Server 2.0.47
- Application Servers: BEA WebLogic 8.1 SP2
- Browser Support: IE 5.5 SP2 or higher
- JVM if using applets:
 - MS JVM 5.0.3802 or higher
 - Sun JVM Plug-in 1.4.2_03

Additional Certifications (after WorkSite MP 4.0 release):

- Operating Systems: Sun Solaris 8
- Database: Oracle 8.1.7 Enterprise Edition/9.2.0 Standard & Enterprise Edition

About Interwoven

Interwoven, Inc. is the world's next-generation enterprise content management (ECM) company. Interwoven's patented, award-winning ECM platform integrates the six pillars of content management: collaboration, e-mail management, document management, Web content management, digital asset management, and records management. Allied with the leading enterprise application providers, the Interwoven ECM platform provides complete, end-to-end, content management for more than 2,800 organizations worldwide including Air France, Citibank, Ford, General Electric, Jones Day, Pfizer, Procter & Gamble, and Yamaha.



About BEA

BEA Systems, Inc. (Nasdaq: BEAS) is the world leader in application infrastructure software, providing the enterprise foundation for more than 15,000 customers around the world, including the majority of the Fortune Global 500. BEA and its WebLogic brand are among the most trusted names in business. BEA's platform is also the de-facto standard for hundreds of systems integrators, independent software vendors, and application service providers who partner with BEA to ensure the successful deployment of customer solutions. Headquartered in San Jose, Calif., BEA has 77 offices in 31 countries.

Interwoven, Inc.
803 11th Avenue
Sunnyvale, CA 94089 USA
(408) 774-2000

Interwoven, TeamSite, Content Networks, OpenDeploy, MetaTagger, DataDeploy, DeskSite, iManage, FileSite, MediaBin, MetaCode, MetaFinder, MetaSource, OpenTransform, Primera, TeamPortal, TeamXML, TeamXpress, VisualAnnotate, WorkKnowledge, WorkSite, WorkDocs, WorkPortal, WorkRoute, WorkTeam, Microsoft Outlook is the registered trademark of Microsoft, Corp., the respective taglines, logos and service marks are trademarks of Interwoven, Inc., which may be registered in certain jurisdictions. All other trademarks are owned by their respective owners. Copyright 1996-2005 Interwoven, Inc. All rights reserved. sbcdm-2 August 2004.