

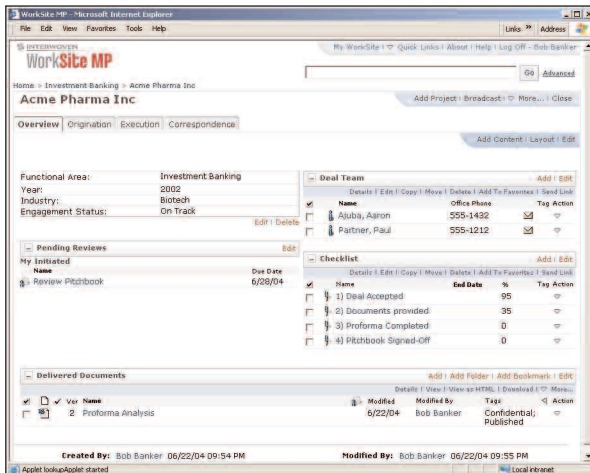
Interwoven® WorkSite MP Client and Integration Options

Managing Adoption Through Superior User Experience

A key factor for success in any collaborative document management (CDM) initiative lies not only in providing the security, features, and tools that are needed but also providing them in a way that is most appropriate for the end users. As the leading CDM vendor in the marketplace today, Interwoven offers not only the broadest feature set available, but also a complete range of deployment options – including Web clients, offline clients, e-mail client interfaces, portlets, and office application client interfaces – that allow companies to decide the best way to surface this functionality to users inside and outside of their organization. Users want interfaces that are intuitive, full-featured, and that match the way they work – whether in the office or on the road. IT wants interfaces that are supportable, fit into their existing IT environment, and are fully extensible, in order to take advantage of new technologies and applications. With Interwoven’s WorkSite MP, organizations get the best of both worlds.

Web Client

Leverage the Internet completely, providing access to critical documents and team materials regardless of location or machine used with WorkSite MP’s Web client. To match business user’s needs, and to drive adoption, administrators can create the optimal “look and feel” using out-of-the-box configuration tools. Elements such as dialog windows, terminology, branding – the entire interface – can be easily configured to meet the unique needs of different

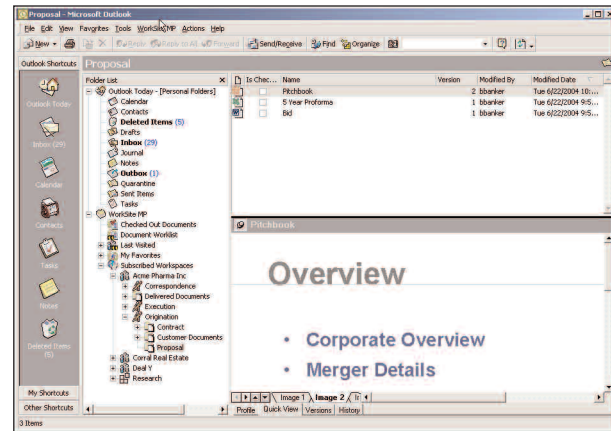


Web client

departments. The features are so complete and the interface so intuitive, that complete project workspaces can often be set up in under 10 minutes. Plus, with the ability to house multiple department configurations on a single server instance and a zero footprint client, WorkSite MP’s Web client lightens the burden on IT resources for implementation and ongoing maintenance.

WorkSite MP Integration for Microsoft Outlook®

With the Microsoft Outlook Integration, the CDM functionality provided by WorkSite MP is presented within the context of the familiar and user-friendly Microsoft Outlook client; thus, the need for training is minimized and the productivity of users is maximized. The Microsoft Outlook integration allows users to



WorkSite MP Integration for Microsoft Outlook®

work with the e-mails, documents, and other content assets that exist within a project space from within the Outlook interface. Users can literally drag e-mails and attachments out of Microsoft Outlook and store them in WorkSite MP, where they can be filed, secured, and even managed as records. Additionally, not only are the e-mails and attachments available for viewing and management, but workspaces and the project information that the user has access to are also available through this interface. The integrations with Microsoft Outlook and Lotus Notes (see below) give users confidence that they are always working with the current and correct version of documents and information – effectively removing the “old copy” and “outdated document” version problem that has plagued collaboration projects in the past.

Lotus Notes Integration

The WorkSite MP integration into Lotus Notes provides seamless connection between Lotus Notes Mail and WorkSite MP. Similar to the Microsoft Outlook integration described above, the Notes integration allows users to save Lotus Notes e-mails into WorkSite MP as e-mails, save Lotus Notes attachments into WorkSite MP as documents, and attach documents managed within WorkSite MP to Lotus Notes e-mails. This integration with Lotus Notes allows users and companies to better manage, leverage, and share work created in Lotus Notes with other users within and outside the organization.

Microsoft Office Integration

Microsoft Office is the leading authoring tool for today's "front office" professional. WorkSite MP's Microsoft Office integration allows users to keep their productivity high by allowing them to stay in their familiar Microsoft Office applications — Word, Excel, and PowerPoint — while at the same time providing them access to WorkSite MP functionality through the presentation of additional tool buttons on the toolbar. With these tools, users can find, retrieve, edit, modify, and create new content in the WorkSite MP repository from their familiar Microsoft Office applications.

Offline Client

Not all users are connected to the network at all times. Particularly for executives, consultants, auditors, lawyers, and traveling professionals, the ability to work with documents while remote is critical. With the WorkSite MP Offline client, before disconnecting users can transfer files, folders, projects, or entire workspaces to their laptops. The Offline client provides users the ability to access all content and project information, and to create, edit, modify, and delete while disconnected. Upon reconnection, WorkSite MP provides automatic synchronization and comprehensive conflict resolution, so that changes made while working offline can be quickly reconciled, and documents made immediately available to all approved users.

CDM Portlets

Introducing the CDM features of WorkSite MP — such as team workspaces, workflow, task management, group calendaring, and search — into an enterprise portal environment allows employees, partners, and customers to realize more value from their portal experience. With "single sign on" from the portal interface, users are validated with the WorkSite MP server. Access and preferences are loaded within the portlets and displayed appropriately within the

portal. Users can organize team projects, maintain oversight on the projects that they are involved in, and track their documents, tasks and commitments through personalized portal pages more easily than ever before. Plus, with project and document notifications delivered automatically to their home portal page, employees can accelerate response times, service levels, and sales cycles.

APIs

In addition to the client options listed above, WorkSite MP has complete APIs for JAVA, COM, .Net, and Web Services standards. All WorkSite MP functionality is exposed through the API. The broad selection of API choices allows customers to leverage their existing developer resources and IT infrastructure to extend existing clients, develop their own clients, or integrate WorkSite MP into third party applications such as ERP and CRM systems.

Summary

As the leading CDM vendor in the marketplace today, Interwoven offers not only the broadest feature set available but also the most complete range of deployment options — including Web clients, offline clients, e-mail client interfaces, portlets, and office application client interfaces. WorkSite MP allows professionals to work in their most productive environment without having to learn new technology or new interfaces, leading to quick adoption and rapid ROI results, while at the same time giving IT the flexibility to deploy the solution in the most appropriate manner. With WorkSite MP, customers get the market-leading CDM solution to deploy in the way that gives them the lowest cost, quickest payback, and least invasive way possible.

For information on supported platforms and system requirements, please download the datasheet at:

http://www.interwoven.com/documents/solutionbriefs/sb_wsmpsp.pdf

Interwoven, Inc.
803 11th Avenue
Sunnyvale, CA 94089 USA
(408) 774-2000

Interwoven, TeamSite, Content Networks, OpenDeploy, MetaTagger, DataDeploy, DeskSite, iManage, FileSite, MediaBin, MetaCode, MetaFinder, MetaSource, OpenTransform, Primera, TeamPortal, TeamXML, TeamXpress, VisualAnnotate, WorkKnowledge, WorkSite, WorkDocs, WorkPortal, WorkRoute, WorkTeam, Microsoft Outlook is the registered trademark of Microsoft, Corp., the respective taglines, logos and service marks are trademarks of Interwoven, Inc., which may be registered in certain jurisdictions. All other trademarks are owned by their respective owners. Copyright 1996-2005 Interwoven, Inc. All rights reserved. sbwsci_3—June 2005.